

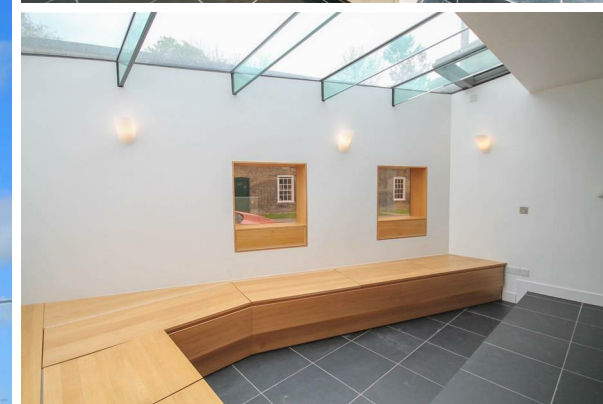


Redmayne Arnold & Harris
estate agents, letting agents & surveyors

rah.co.uk

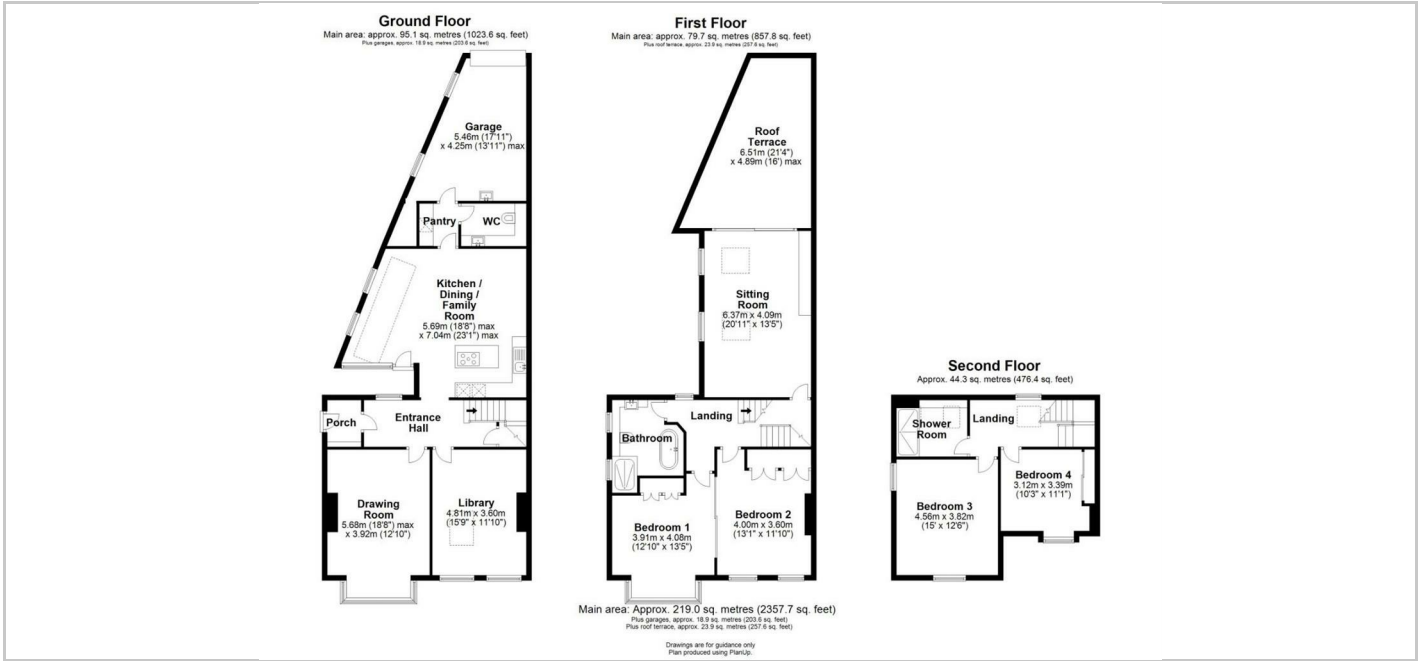


TO LET



1 Park Parade, Cambridge, CB5 8AL

£4,000 Per Month



Directions

THE PROPERTY

This late-19th-century terraced home has been beautifully preserved, offering a rare combination of historic charm, tranquil surroundings, and iconic views over Jesus Green—while still providing effortless access to Cambridge city centre. It’s an exceptional choice for anyone seeking a refined, characterful property in one of the city’s most desirable neighbourhoods.

Thoughtfully extended, the property provides generous and versatile living space, beginning with an entrance hall leading to a drawing room, a library complete with wine cellar, and a kitchen/breakfast room, with a utility room. The first floor features a spacious living room with doors opening onto a private roof terrace—perfect for outdoor dining—along with two double bedrooms and a family bathroom. The top floor offers two further double bedrooms and an additional shower room. This property will be managed by RAH.

Council Tax Band: G
EPC Rating: D
Minimum tenancy length 12 months
Deposit £5,610
Holding Deposit £390

SITUATION

